

ubiwhere

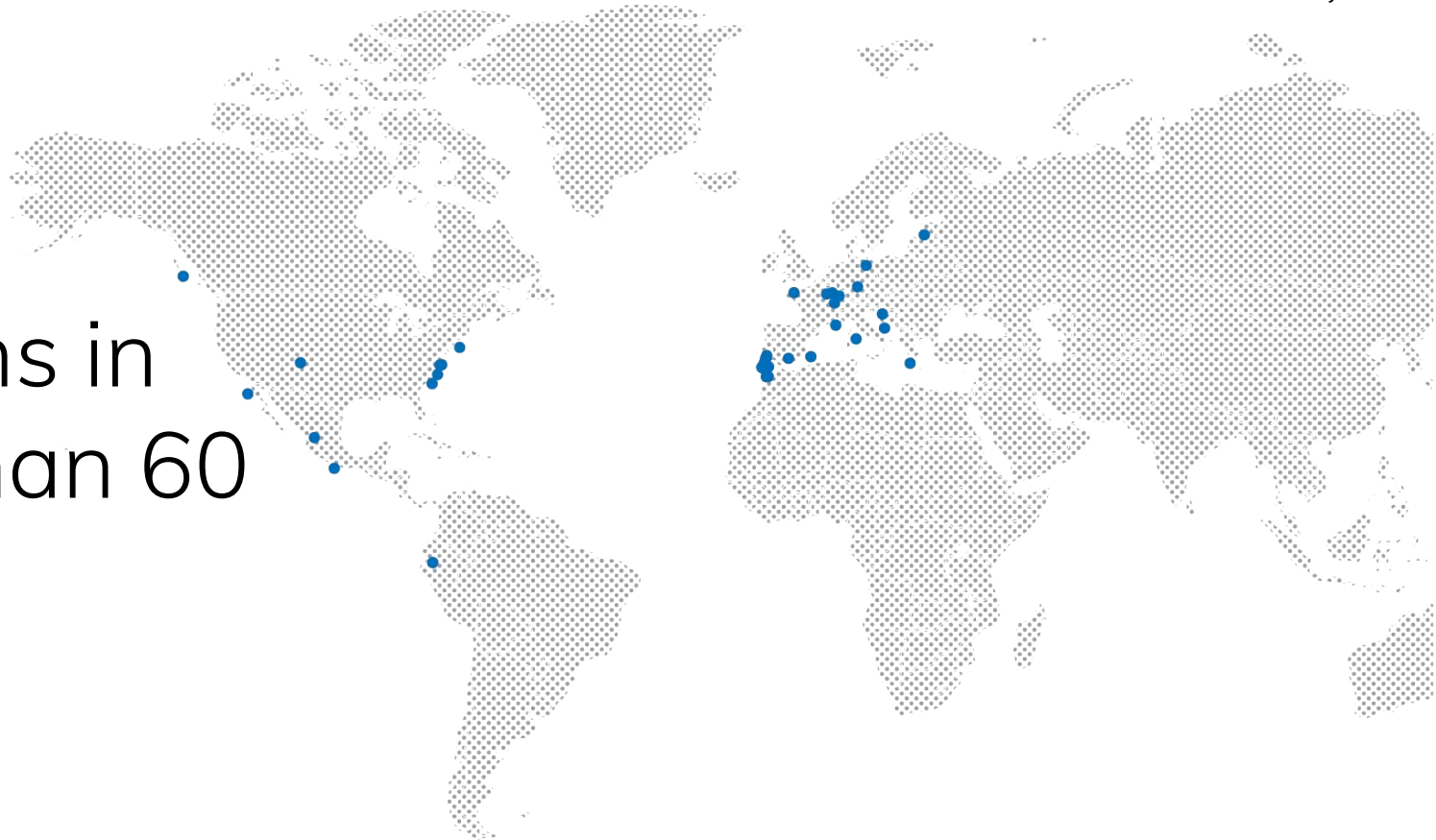
The City Nervous System



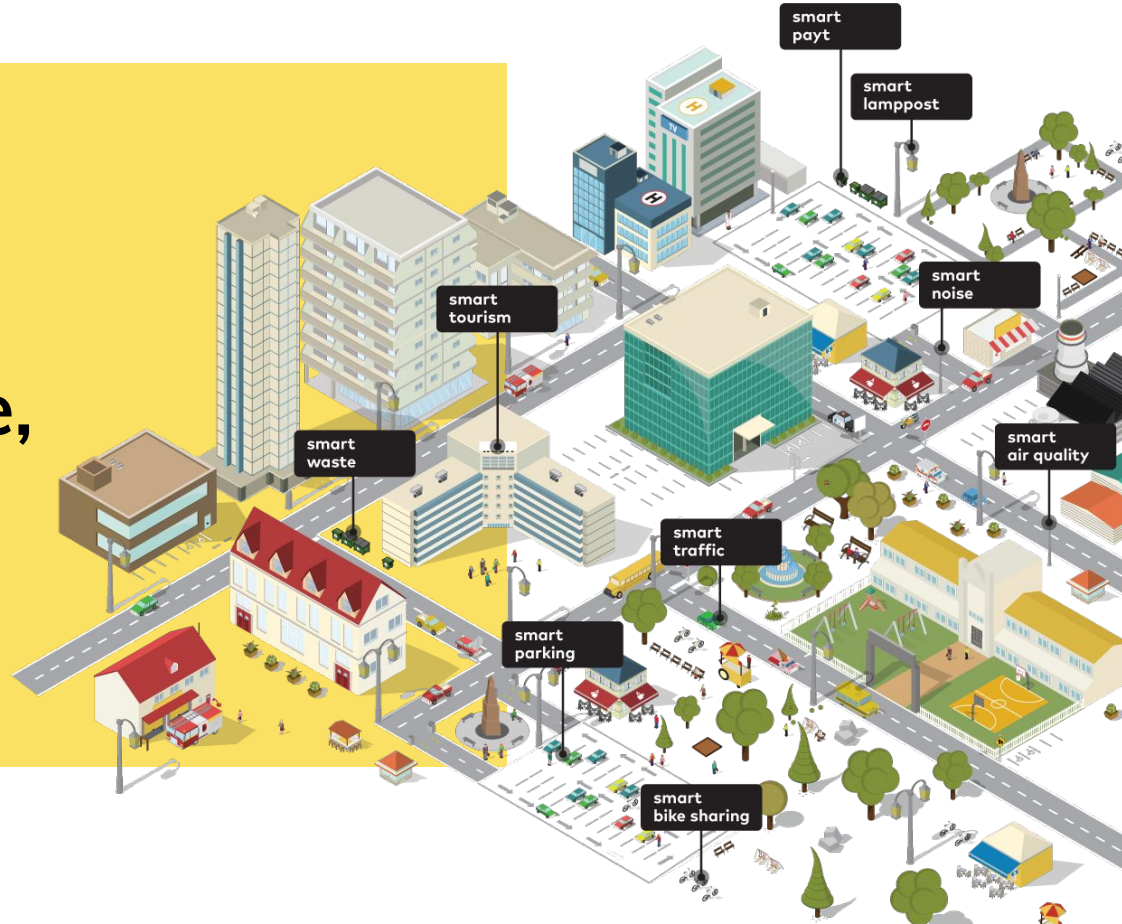
ubiwhere

— Future Mobility

With
solutions in
more than 60
cities.



Can you imagine
your city as a single,
integrated system?



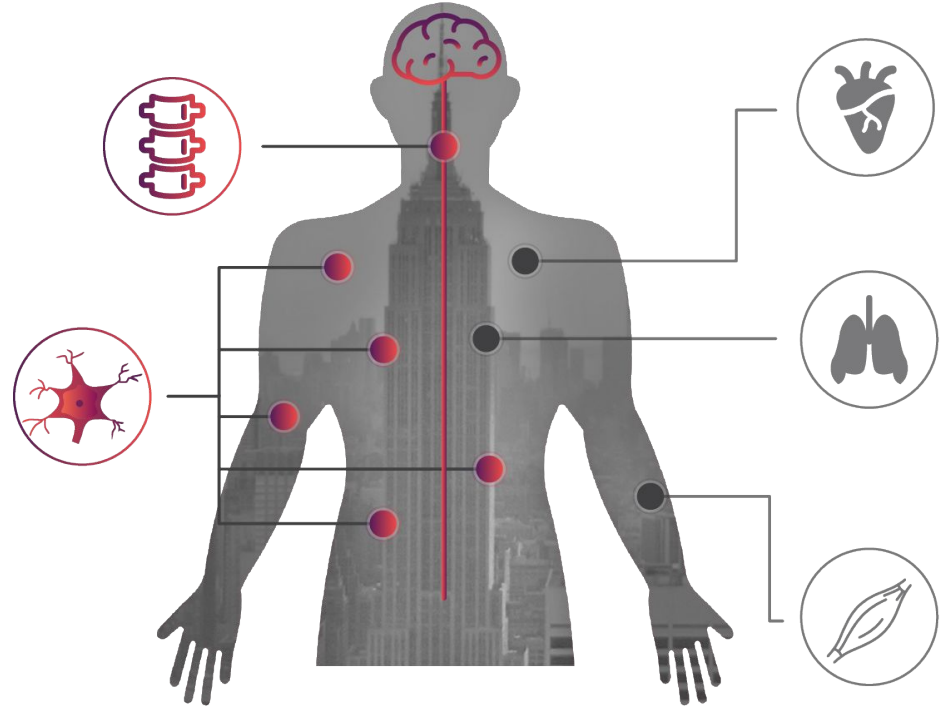
ubiwhere

The City Nervous System

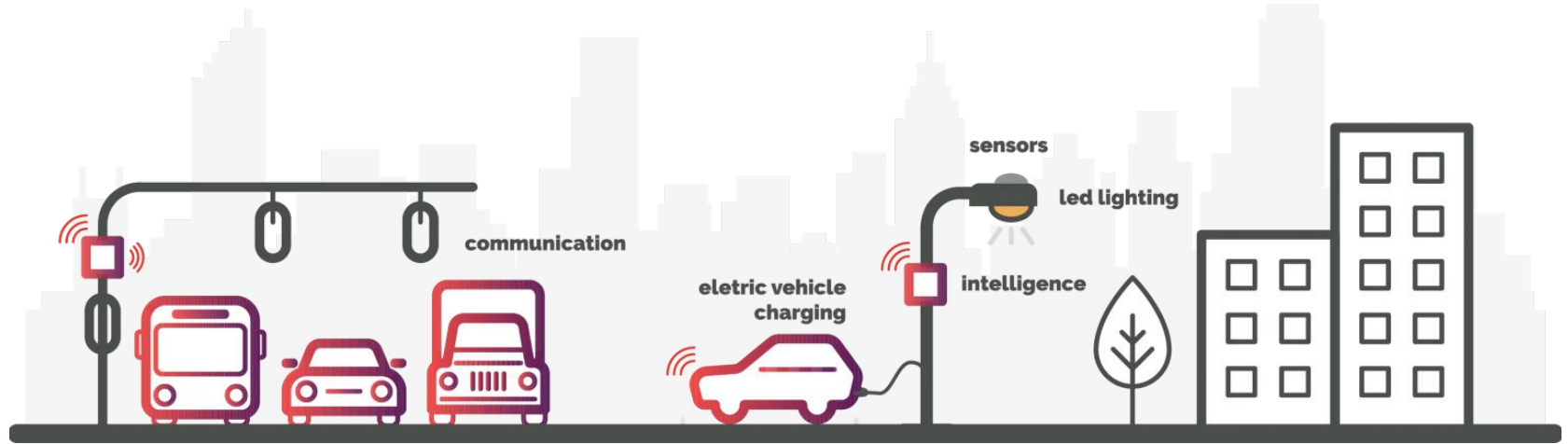
An Organic Approach to City Management

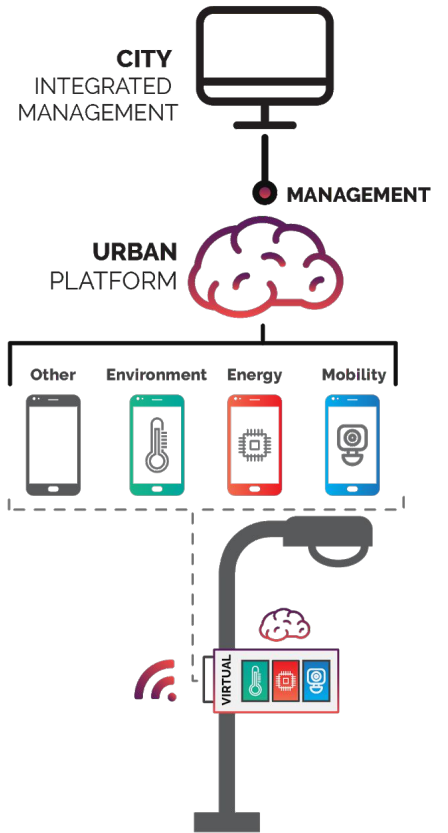


Transmitting
signals everywhere
to efficiently
coordinate the
actions of the
“body”.



Peripheral Nervous System.





ubiwhere

Central Nervous System.

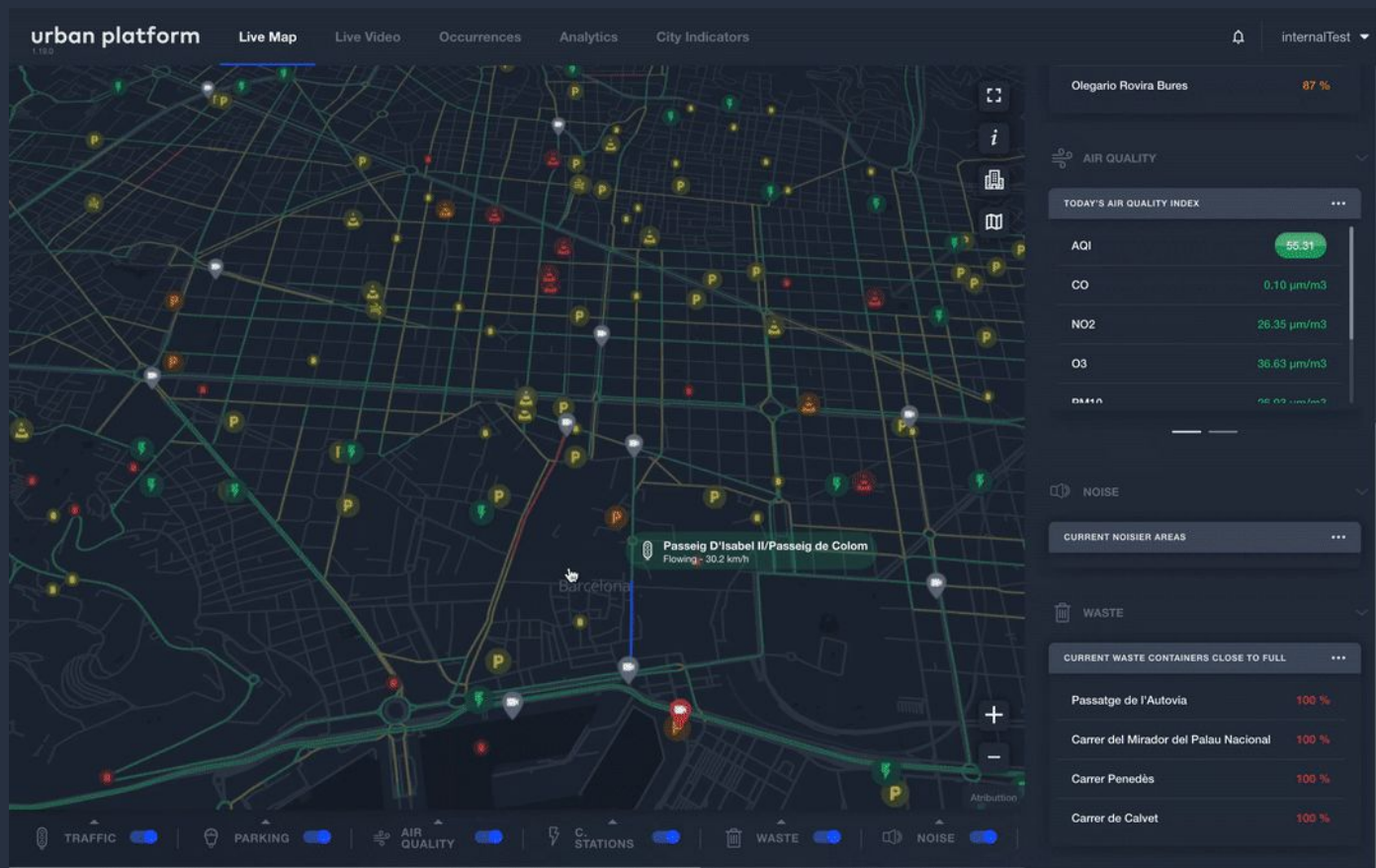


Real-time status of the city

+ information from several domains and sources in a single map (mobility, energy, safety)

+ general overview of short-term historical data for comparison

+ capability to make decisions in real-time



Urban Platform Filter

Day of the Week

Select [Day of the Week]

Time of the Day

Select [Time of the Day]

Parish

Select [Parish]

Average Parking Occupancy

83.76

Maximum Parking Occupancy

99

Parking Areas Monitored

3

Average Traffic Jam

1.01

Maximum Traffic Jam

8.39

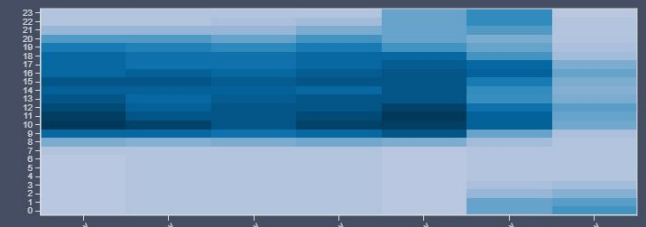
Roads Monitored

43

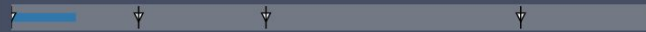
Parking Occupancy Levels



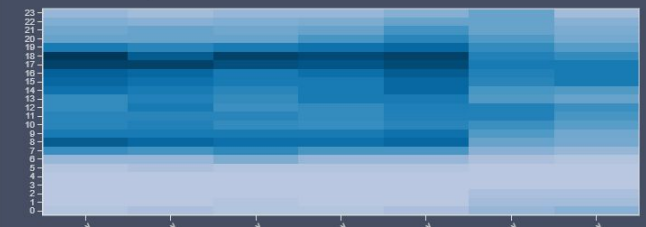
Parking Percentage Heatmap



Traffic Jam Levels



Traffic Jam Heatmap



KPIs Analysis

+ dynamic, contextual insights about the city ecosystem to foster smooth operations

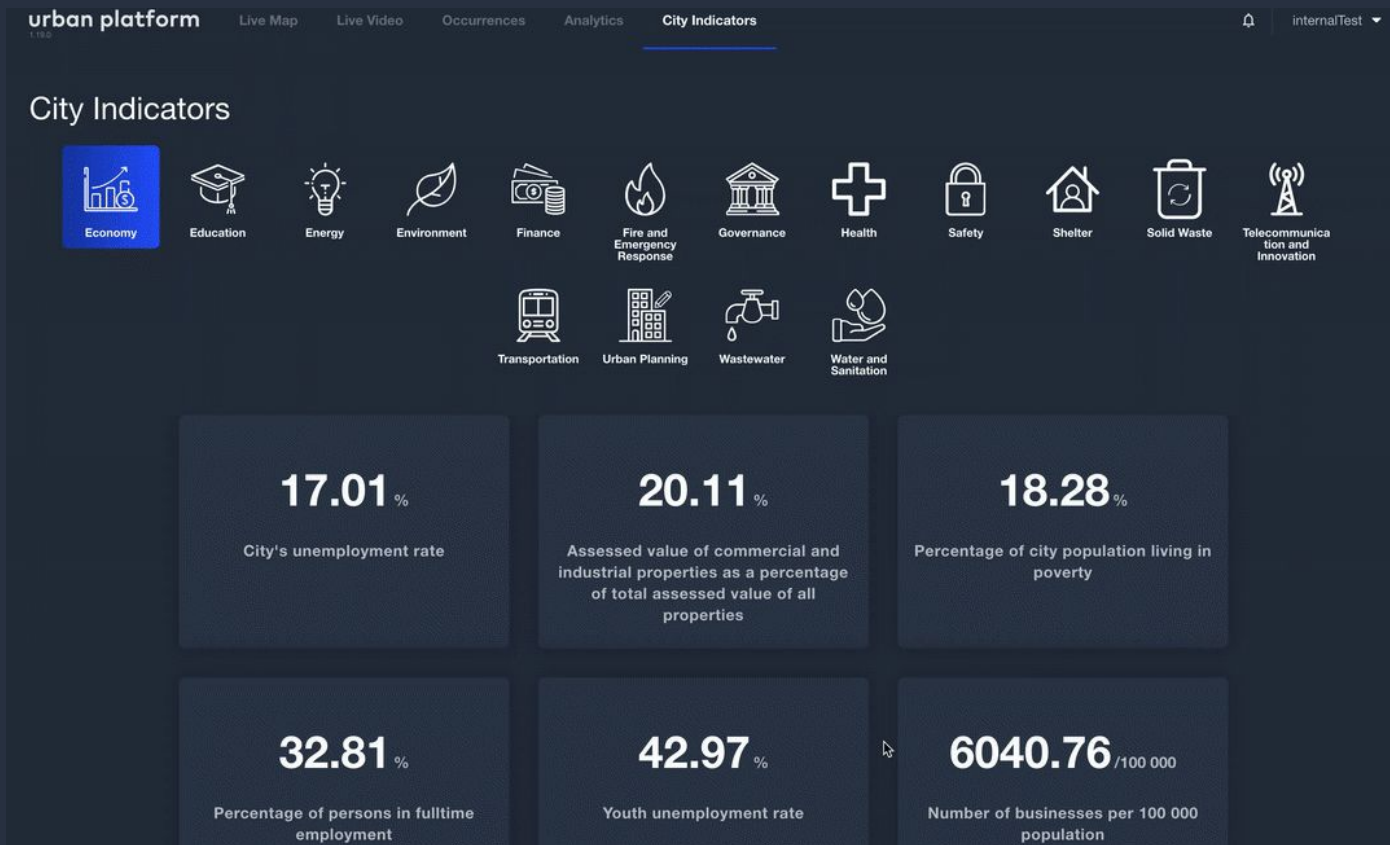
+ customisable dashboard for data-driven decisions

+ correlation of information for knowledge extraction, forecasting, reporting and impact assessment

Sustainability

+ Well-defined metrics to help cities benchmark their progress towards the United Nations' Sustainable Development Goals

+ Benchmark the city throughout time with Sustainable Cities and Communities Indicators from ISO 37120 and 37122



Occurrences Management

+ based on custom workflows, in order to make the data analysis easier and efficient

+ identify closest vehicles or units for route planning and efficient dispatch

+ Automatically traces best routes from firefighters or police stations to the occurrence location

urban platform 1.10.0 Live Map **Occurrences** Analytics Indicators

Occurrences and incidents

400 ONGOING EVENTS Latest updates

#	Category	Location	Status	Assignee	Creation	Last modification
#719	Outros Segurança Rodoviária	Rua Francisco Santos Guimarães, Urgezes, Guimarães, Braga, Ave, Norte, 4800, Portugal	Received	-	01/06/2020 09:24:00	01/06/2020 08:25:25
#718	Em falta ou danificado Sinalização de trânsito	Padaria Lugarinho, Rua Doutor Raul Alves da Cunha, Costa, Guimarães, Braga, Ave, Norte, 4810-257, Portugal	Received	-	31/05/2020 20:30:00	31/05/2020 19:35:37
#717	Outros Danos no espaço público	Oliveira do Castelo, Oliveira, São Paio e São Sebastião, Guimarães, Braga, Ave, Norte, 4800-024, Portugal	Received	-	31/05/2020 00:10:00	30/05/2020 23:10:11
#716	Estrada ou passeio danificado Danos no espaço público	Talho Vitória, Rua Paulino Lobo, Urgezes, Guimarães, Braga, Ave, Norte, 4810, Portugal	Received	-	30/05/2020 13:30:00	30/05/2020 12:35:38
#715	Candeeiros danificados Danos no espaço público	Igreja de São Dâmaso, Rua Doutor Joaquim Meira, Oliveira do Castelo, Oliveira, São Paio e São Sebastião, Guimarães, Braga, Ave, Norte, 4800-024, Portugal	Received	-	29/05/2020 18:26:00	29/05/2020 17:31:00
#714	Candeeiros danificados Danos no espaço público	Rua Comandante João de Paiva Faria Leite Brandão, Carvalhos, Polvoreira, Guimarães, Braga, Ave, Norte, 4835-449, Portugal	Received	-	29/05/2020 14:12:00	29/05/2020 13:15:16
#713	Outros	Largo da Carvalha, Fermentões, Guimarães, Braga, Ave, Norte	Received	-	29/05/2020	29/05/2020

Filters

Filter by keyword or id
Filter by...

Status
All

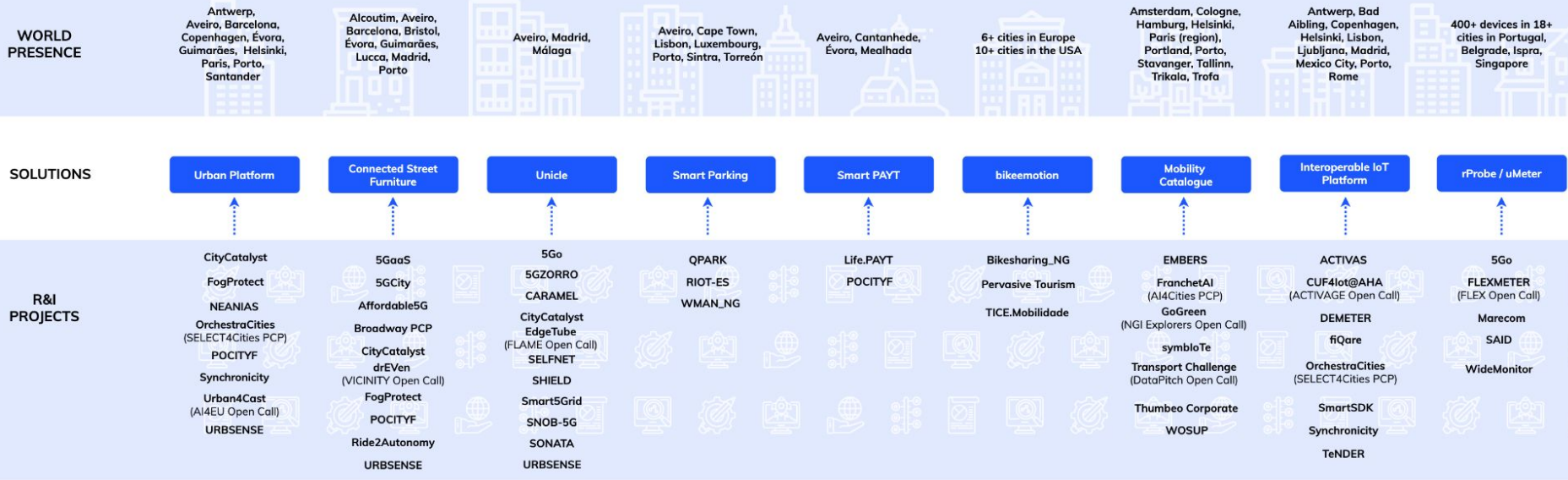
Event Type
All

Source
All

Severity level

1 2 3 4 5 6 ...

Enabled by R&I.



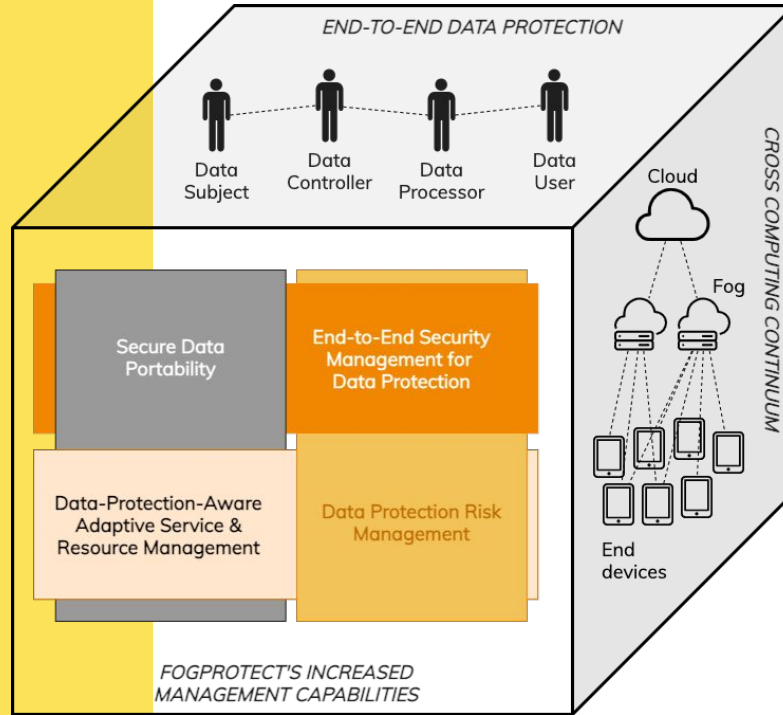
ubewhere

FogProtect

fogprotect.eu



This project has received funding from the EU's Horizon 2020 Programme



URBSENSE

upgrading street
furniture for
connectivity



Pilots

- **Helsinki** - IoT + Edge Computing
- **Barcelona** - Edge Computing + Telecom (5G) w/ Neutral Hosting
- **Aveiro** - Edge Computing + IoT + Telecom (5G)

... infrastructure & equipment deployment, **focused on specific services**
(example: mobility analytics) @ **the Edge of the network**

City Catalyst

Catalyst for
sustainable cities

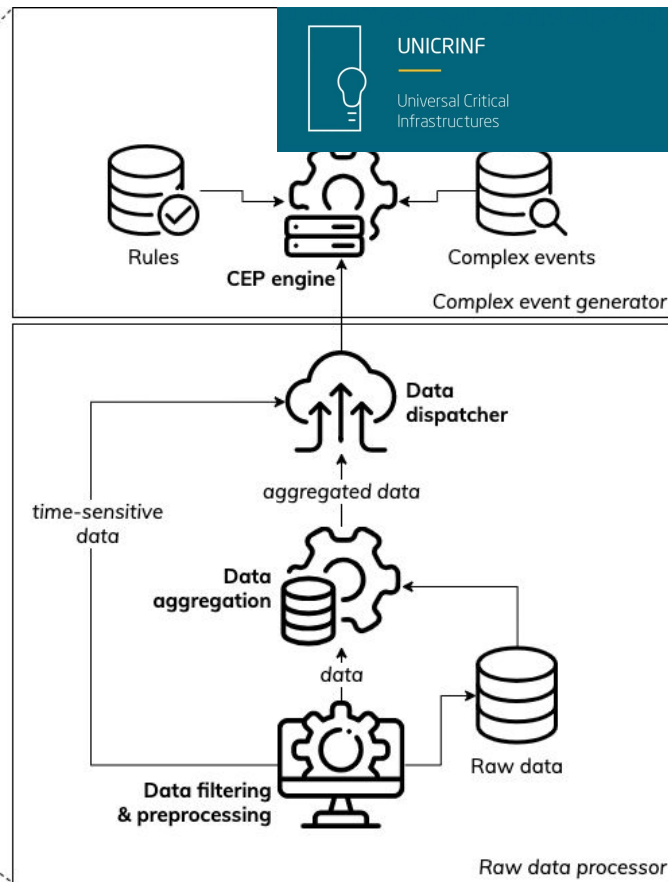
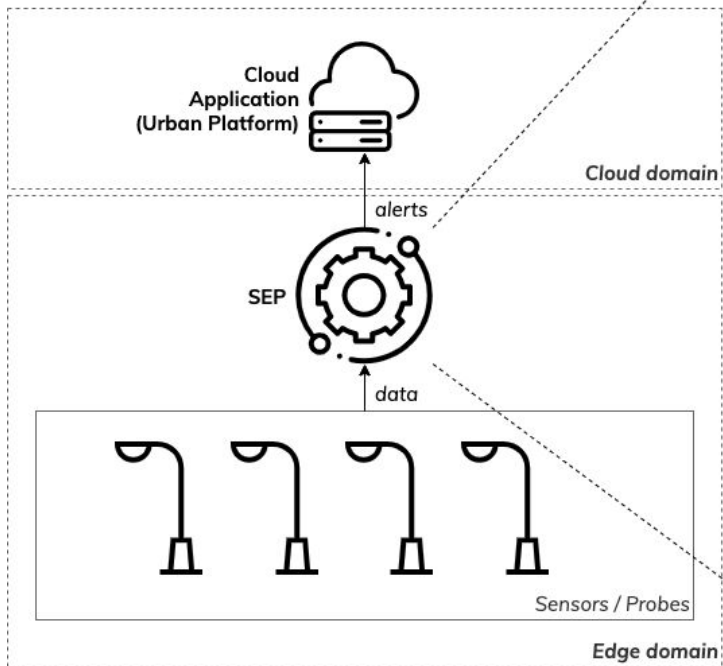


Sensing, communication and computing infrastructure and Normalized City Analytics: to promote an effective digital transition in cities by mitigating the risks associated with the investment in cities and communities.

Ubiwhere is normalising data models and interfaces to avoid silos between different domains, solutions or cities.

ubiwhere

SEP is a framework designed for the edge of the network with the main goal of providing real-time monitoring of IoT data and generate complex events based on data correlation.





Scalable and Self-optimised 5G
Wireless Network Backhauling



International R&I Project

- mmWave mesh backhauling
- Resilient and highly-available networks
- Efficient and intelligent routing through network coding

“not just more pipes, but intelligent and efficient routing”

- Application-aware dynamic self-optimisation
- Privacy preserving techniques



Thank you!

Rita Santiago

Telecom and Future Internet R&I
Manager

rsantiago@ubiwhere.com



ubiwhere